



TOP HI-TECH CO., LTD.

LED Tri-proof Light



20W
30W
40W



Specification Sheet

Design 2020 / 10



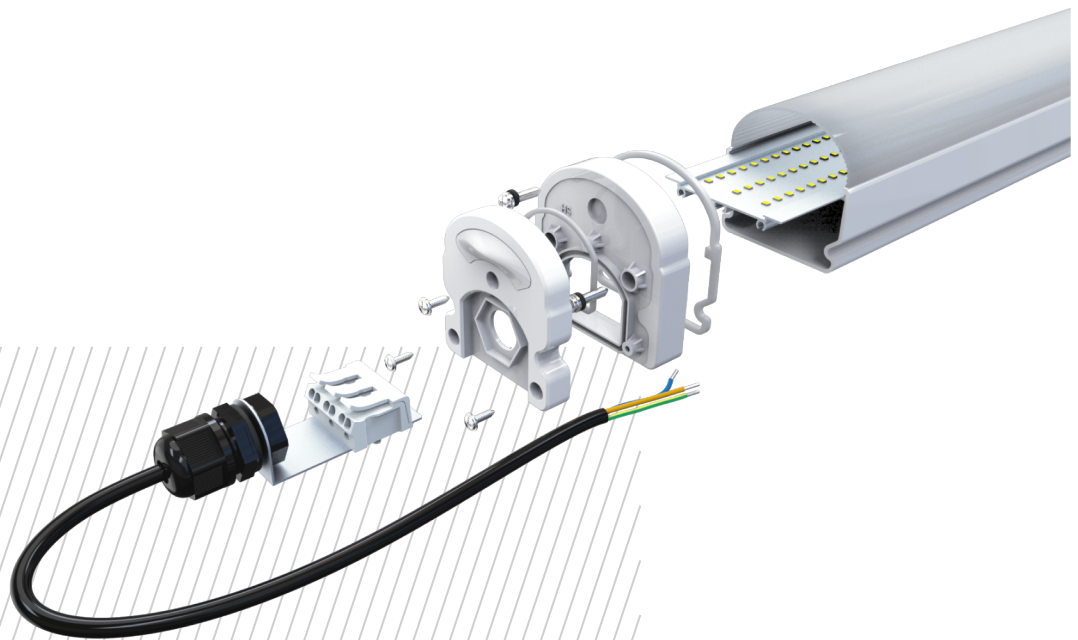
+886-2-2267-1234
sales@tht-ex.com
www.tht-ex.com

Product Features

THT LED Tri-proof Light with high efficacy delivering substantial energy saving. Apply to shopping mall, retail store and office application. For its excellent waterproof function, suitable for both dry and wet location. It can be used as a multi-purpose replacement for these applications: vapor-tight & wrap-around. Ideal for stairwells, bathrooms, parking structures, tool shops, etc.

Advantages

- Lighting: Even illumination; Non-glare
- Cover: UV Protection
- Cost: Cost effective
- IP Rating: IP65
- Driver: High Quality TUV, SAA, CE driver, flicker-free
- Warranty: 3 Years warranty
- Installation: Easy to install, firm & fast



Specifications

20W

Model No.	THTLABOA05AWOB	THTLABOA05ACOB
Color Temp.	3000K	6500K
Wattage (±10%)	20W	
Luminous Flux (±10%)	2,400 lm	
Lum. / Wat. (±10%)	120 lm, Max. 140 lm	
Input Voltage	AC 200V-240V	
Net Weight	1.0 kgs (2.2 lbs)	
CRI	>80Ra	
Beam Angles	120°	
Power Factor	>0.95	
IP Rating	IP65	
Ambient Temp.	-20°C ~ +45°C	
Material	●Housing: PC Housing and Aluminum Heat-sink ●Cover: Milky Cover (standard), Clear Cover (optional)	
Mounting	Surface mount brackets (standard), Wall mount and Suspension (optional)	
Warranty	3-year warranty	

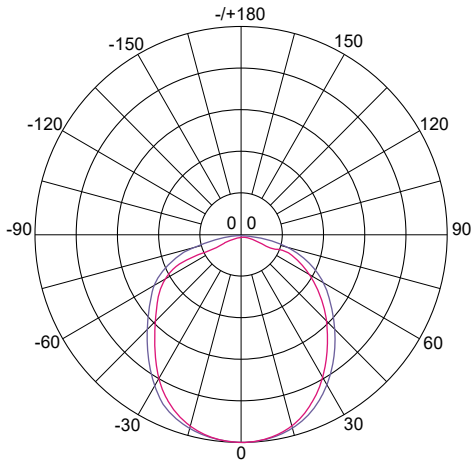
30W

Model No.	THTLABOA06AWOC	THTLABOA06ACOC
Color Temp.	3000K	6500K
Wattage (±10%)	30W	
Luminous Flux (±10%)	3,600 lm	
Lum. / Wat. (±10%)	120 lm, Max. 140 lm	
Input Voltage	AC 200V-240V	
Net Weight	1.5 kgs (3.3 lbs)	
CRI	>80Ra	
Beam Angles	120°	
Power Factor	>0.95	
IP Rating	IP65	
Ambient Temp.	-20°C ~ +45°C	
Material	●Housing: PC Housing and Aluminum Heat-sink ●Cover: Milky Cover (standard), Clear Cover (optional)	
Mounting	Surface mount brackets (standard), Wall mount and Suspension (optional)	
Warranty	3-year warranty	

40W

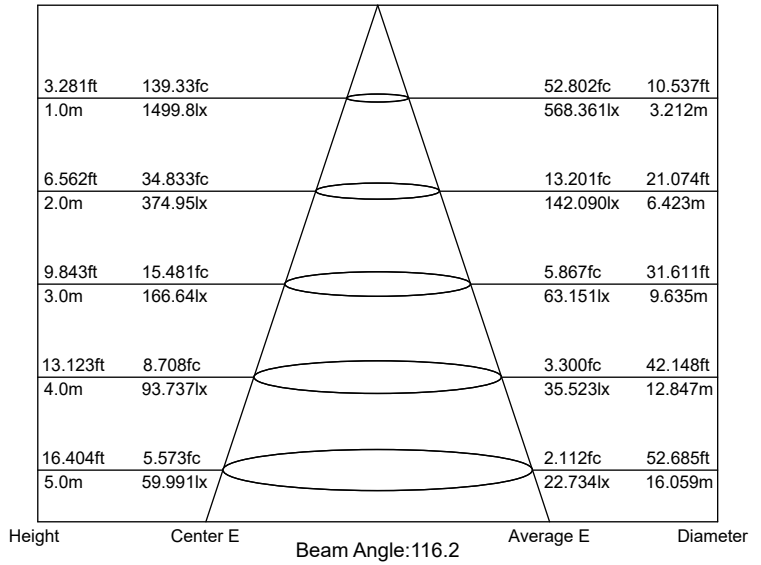
Model No.	THTLABOA06AWOD	THTLABOA06ACOD
Color Temp.	3000K	6500K
Wattage (±10%)	40W	
Luminous Flux (±10%)	4,800 lm	
Lum. / Wat. (±10%)	120 lm, Max. 140 lm	
Input Voltage	AC 200V-240V	
Net Weight	1.5 kgs (3.3 lbs)	
CRI	>80Ra	
Beam Angles	120°	
Power Factor	>0.95	
IP Rating	IP65	
Ambient Temp.	-20°C ~ +45°C	
Material	●Housing: PC Housing and Aluminum Heat-sink ●Cover: Milky Cover (standard), Clear Cover (optional)	
Mounting	Surface mount brackets (standard), Wall mount and Suspension (optional)	
Warranty	3-year warranty	

Light Pattern

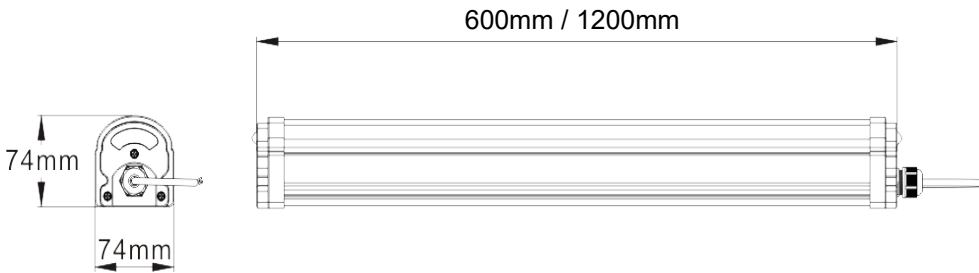


C Plane 40W [50% Max Ang.] [10% Max Ang.]
 — C0.0_180.0: 115.9 184.3
 — C90.0_270.0: 108.2 155.9

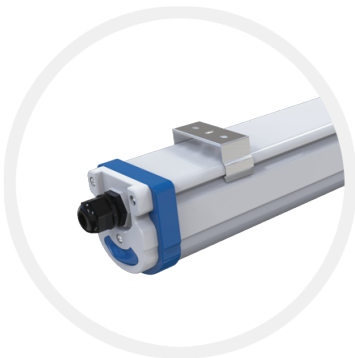
Illuminance-Distance Curve



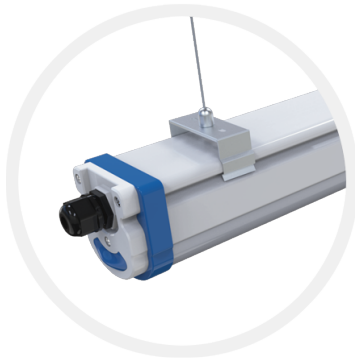
Dimension Drawing (All in mm)



Installation



Surface Mount



Suspension



Wall Mount